

## **KIW RE-ACETONING MACHINE/ CYLINDER MANAGEMENT SYSTEM**



**Flexible System adapted to  
Production reporting as per  
each site – NO Manual  
Calculation – Easy to Operate**

PR 1713 Series of controllers with characteristics like 35,000 hrs. MTBF, extensive data storage facility, Flash memory leads to calibration data being stored without any fear. The stainless steel enclosure and emergency data entry from built in keyboard makes life easier. Also these controllers can be programmed by any engineer who knows PLC programming In IEC – 61131.

INTRODUCING KONTROLS & INDUSTRIAL WEIGHING'S SOLUTION TO THE PROBLEM OF RESIDUAL GAS CALCULATION AND ACETONE FILLING – AN ALL NEW RE-ACETONING MACHINE ABLE TO HANDLE THE ADDITION OF ACETONE INTO ACETYLENE CYLINDERS IN A RELIABLE, ACCURATE AND FAST MANNER.

The KIW re-acetoning machine consists of a weighing platform, a local operator interface (incorporating a message screen and keypad) and an acetone connection in combination with a temperature and pressure measurement capability. A pneumatically operated control valve doses acetone into the acetylene cylinders. All production information is collected and analysed remotely by KIW's exclusive FILL RIGHT KONTROL software which operates in a PC/AT environment.

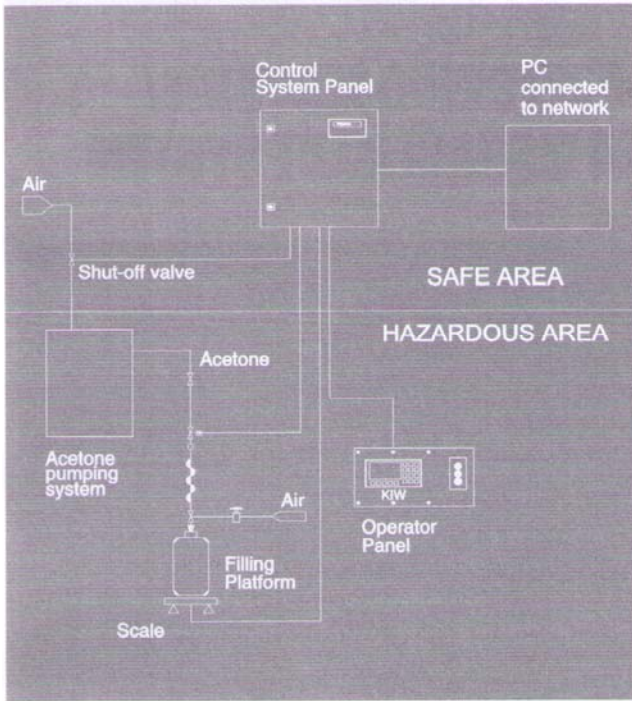
### OVERVIEW:

- Highly accurate batching of acetone into all types of acetylene cylinders.
- Precise calculation of residual gas and acetone loss using our exclusive KIW FILL-RIGHT software (international patent pending).
- User friendly operator's interface for quick and easy operation.
- No more manual data recording.
- No more reference to pressure tables.
- Database of all cylinders grouped according to type, size and/or volume of each cylinder.
- Additional remote diagnostics and cylinder bar-coding options available.
- Re-acetoning machine available in stationary or mobile versions.

**EX APPROVED**

**W & M APPROVED**

**SYSTEMS RUNNING IN  
AUSTRALIA, USA AND ASIA**



A simplified block diagram of the re-acetoning machine system setup

## MAIN COMPONENTS:

- Weighing scale/Platform
- Operator's panel, which includes the Termex 210 operator's interface.
- Computer: required for database Storage and reporting purposes.
- The main and scale posts, which include all the air filters/regulators, solenoid valves, pneumatics, air tools, etc.
- Control box, which includes all the intrinsically safe barriers/interfaces, power supplies and the batch controller

## ADVANTAGES OF THE KIW ACETONE ADDITION SYSTEM:

High accuracy/reliable batching of acetone into acetylene cylinders. Currently batching to within +/- 20 gms.

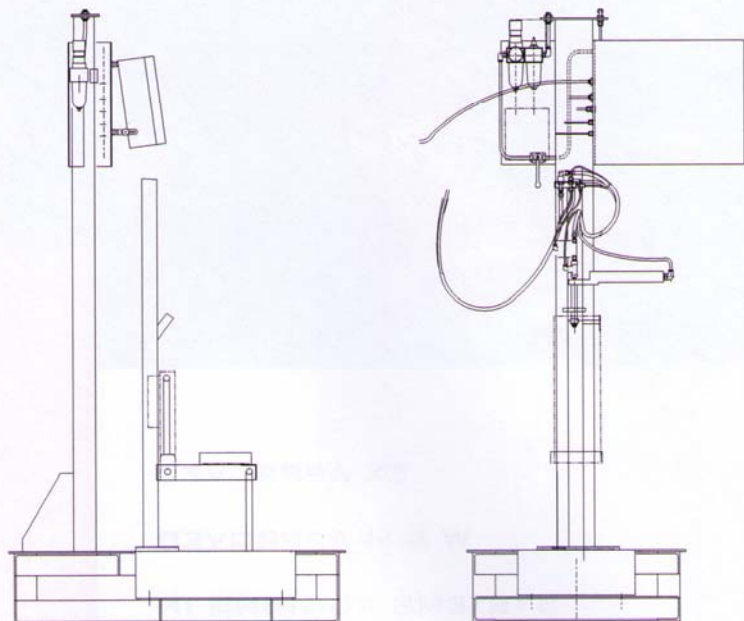
Fast turnover of cylinders being weighed in or weighed out. Weigh in 20-25 seconds/ Weigh out 6-10 seconds.

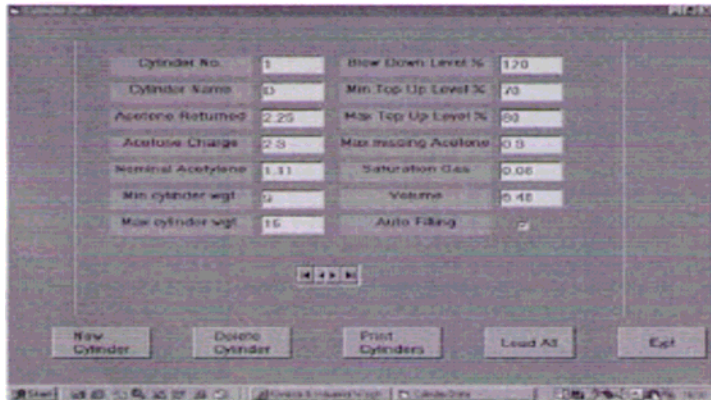
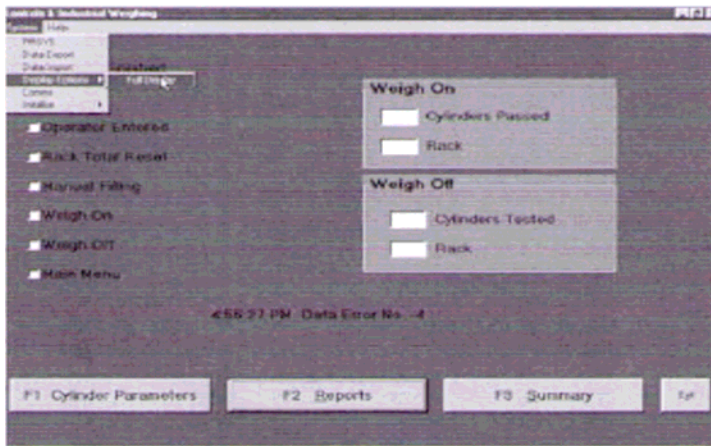
Available reports: Shift summary reports, individual rack reports, Cylinder Weigh on or Weigh off reports. These reports automatically count the number of cylinders that passed, need to be blown down, topped up or are defective, among other features.

Pay-back period of up to one year.

Weights and Measures approved weighing system

All components are Class 1 Zone 1 IIC T3 or better, and thus are suitable for an acetylene environment. They are also all intrinsically safe and approved for use in hazardous environments world wide. Systems can be made for the European (Cenelac), United States (FM approved) & Australian (Aust. Approved) markets.





## THE HEART OF THE SYSTEM: KIW'S FILL RIGHT KONTROL SOFTWARE

The Fill Right Kontrol software is primarily a data collection, archiving and report generation software. It also provides the user with an update/live status of exactly what the acetone filling machine is doing.

All production data is collected by the software, including factors such as:

- Returned gas
- Acetone required
- Acetone filled
- Label weight of cylinder
- Actual weight
- Pressure
- Temperature
- Serial number
- Type of cylinder
- Status (blowdown/top up/full, etc)

This information is then stored in a database which can be accessed in a manner that facilitates ease of understanding.

The format of the reports that the software generates is completely customisable, allowing each customer to fulfill all of their particular information requirements.

## Specifications

Weighing platform capacity

Scale Range

Weighing Accuracy

Cylinder size range

Height range

Pressure Measurement Range

Pressure Measurement Accuracy

Temperature Measurement Accuracy

Acetone Addition Accuracy

Keyboard Display

Keys

Power Requirement

Air Supply

Electrical Classification

Environment & Location

Material: Frame:

0-150 Kg

Two ranges of 0-60 kg and 0-150 Kg

+/- 0.003 % of the selected ranges

Max diameter: 310 mm

500-1200 mm

0-30 bar

+/- 5 KPa

+/- 0.5<sup>0</sup> C ( +/- 1<sup>0</sup> F )

+/- 0.02 kg

LCD; 2 x 20 characters; 12.7 mm

8; 15 x 15 mm

240 V, 50 Hz

Dry, Filtered oil free, compressed air in a non-hazardous location. Minimum 450 Kpa ( gauge), Maximum 800 KPa ( gauge), 100 normal litres per minute nominal

Class 1 Zone 1 Gass Group IIC, T3, acetylene hazardous area, classified in accordance with AS 2430.1-1987

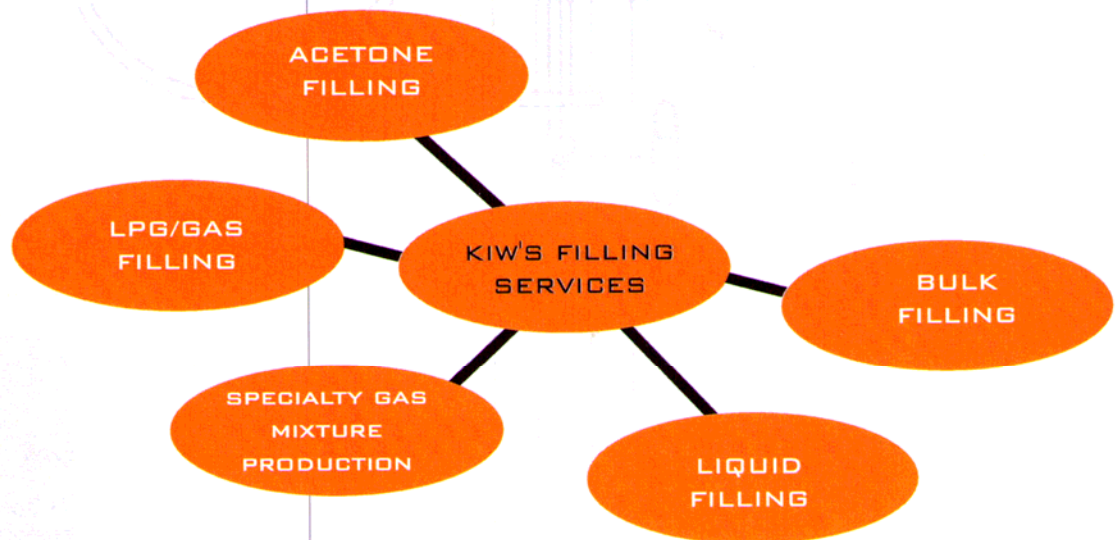
0-45<sup>0</sup>C max, ambient, indoor

Mild steel, powder coated pipework & fittings

## KONTROLS & INDUSTRIAL WEIGHING

### KIW AFTER-SALES SERVICE FEATURES:

- Installation
- Customised Training
- On site support by our service engineers
- Telephone support
- Remote access diagnostic facility: All Machines are connected via phone line to KIW's service department.
- Service Contracts
- Emergency support



For more information  
please do not  
hesitate to contact us:

KONTROLS & INDUSTRIAL  
WEIGHING P/L

Suite 6  
30 Walker St.  
Dandenong, 3175  
Victoria  
Australia

Tel: 61 3 9791 5569  
Fax: 61 3 9791 5589

Email: [sales@kiw.com.au](mailto:sales@kiw.com.au)

WEBSITE: [WWW.KIW.COM.AU](http://WWW.KIW.COM.AU)